



منطقة العاصمة التعليمية

# الاجابة النموذجية

## (امتحان نهاية الفترة الدراسية الثانية للصف التاسع 2021/2022)

Total Marks ( 60 )1. Reading ( 30 Marks )A) Vocabulary ( 14 Marks )a) Choose the correct answer from a, b, c and d: (4×2=8 marks)

1. Wimbledon is the most famous international tennis ..... .  
a. immune      b. tournament      c. cosmology      d. advance
2. The doctor will examine the patient to ..... his illness.  
a. maintain      b. regret      c. diagnose      d. strike
3. Regular exercising leads to ..... muscle and body strength.  
a. contagious      b. conventional      c. spiritual      d. increased
4. There is a ..... that measures distance in space without the use of light.  
a. formula      b. anxiety      c. symptom      d. trait

b) Fill in the spaces with the most suitable word from the list below:(4×1½=6 marks)

(currently / world-renowned / traditionally / material / intellectual )

5. The Kuwaiti government is **currently** building new bridges and roads.
6. Engaging in **intellectual** activities keeps the brain active and healthy.
7. It is a **world-renowned** hospital that treats 200,000 children a year.
8. On Eid, **traditionally** children in Kuwait are given some money as a gift.

**B) Reading Comprehension (16 Marks)**

**Read the following text carefully then answer the question below:**

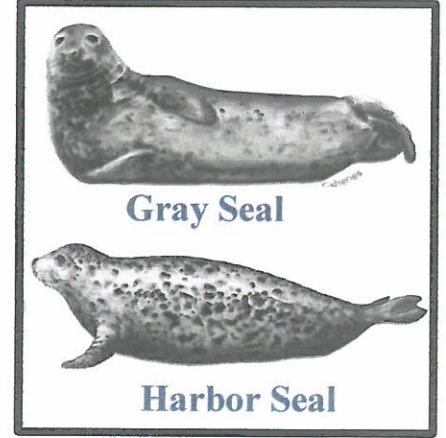
Seals are mammals that live near the sea. Seals don't move around very easily on land. When they do spend time on land, they usually are watching over their newborn "pups." But they spend most of their lives in the water. Seals can dive as deep as 1,000 feet, and can stay under water for over an hour. They can even sleep under water.

The two types of seals most often found in the North Atlantic Ocean are the Gray Seal and the Harbor Seal. These two types of seals are about the same size, and look very similar, but they have some differences.

Harbor Seals have smaller faces than Gray Seals. They have a forehead, and a small nose. Their face looks like a kitten's. Gray Seals have no forehead, and a large, wide nose. Harbor Seals' faces look cute, and Gray Seals' faces look rather dangerous.

Gray Seals are often very **aggressive**. If accidentally caught in fishing nets, they put up a fight. They have been known to attack other large fish. But Harbor Seals feed mostly on small fish. **They** are very curious, and will often follow boats, to see what is going on.

Once a Harbor Seal saved a dog's life. The dog slipped and fell into a river and was swept out to sea. A Harbor Seal started swimming around the dog, pushing it toward the shore. when rescuers got to the dog, there were three Harbor Seals swimming up and down keeping an eye on the dog. Scientists say that Harbor Seals are protective by nature and rarely aggressive.



**a) Choose the correct answer from a, b, c and d: (6x2=12 marks)**

9. The best title for the passage could be:

- A Dog's Life
- New Born Pups
- The Two Types of Seals**
- The North Atlantic Ocean



10. The underlined word (**aggressive**) in the 4<sup>th</sup> paragraph means to:

- a. sleepy
- b. **violent**
- c. weak
- d. slow

11. The underlined word ( **They** ) in the 4<sup>th</sup> paragraph refers to:

- a. gray seals
- b. fishing nets
- c. large fish
- d. **harbor seals**

12. Harbor seals feed mostly on:

- a. **small fish**
- b. dogs
- c. kittens
- d. large fish

13. Gray seal and Harbor seals have the same:

- a. face.
- b. nose.
- c. **size**
- d. forehead

14. The writer wrote this passage to:

- a. persuade readers to visit the Atlantic Ocean
- b. explain how to catch seals.
- c. discuss how seals protect their babies
- d. **tell the readers about seals**

**b) With reference to the passage, answer the following questions: (2x2=4 marks)**

15. How long can seals stay under water?

**They can stay under water for over an hour.**

16. What happened to the dog?

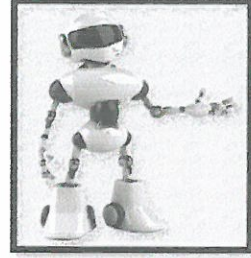
**The dog slipped and fell into a river and was swept out to sea and was saved by a harbor seal.**

**Any reasonable answer related to the text is to be accepted**



**B: Writing 16 marks**

Artificial Intelligence (AI) is the ability of machines to think, learn and imitate the way human beings act. Plan and write a report of two paragraphs (12 sentences) about **AI applications or machines**, discussing **how they may be useful for humans** and **how they may be harmful for them**.



\* Your writing should include a topic sentence, supporting details and a conclusion.

**The plan (2 marks)**

